

Oboe

Marcello Oboe Concerto (C Minor)

Allegro Moderato

3



8



10



14



17



20



25



28



30



Oboe

34

37

40

42

47

50

56

58

Oboe

Adagio

Musical score for the Adagio section, measures 1 through 31. The music is in 3/4 time with a key signature of two flats (B-flat and E-flat). Measure 1 contains a whole rest. Measure 2 has a fermata over a whole note. Measures 3-4 feature eighth-note patterns with slurs and accents. Measure 5 has a fermata over a whole note. Measures 6-7 continue with eighth-note patterns. Measure 8 has a fermata over a whole note. Measures 9-10 feature sixteenth-note patterns with slurs. Measure 11 has a fermata over a whole note. Measures 12-13 continue with sixteenth-note patterns. Measure 14 has a fermata over a whole note. Measure 15 has a fermata over a whole note. Measures 16-17 feature sixteenth-note patterns with slurs. Measure 18 has a fermata over a whole note. Measure 19 has a fermata over a whole note. Measures 20-21 continue with sixteenth-note patterns. Measure 22 has a fermata over a whole note. Measures 23-24 continue with sixteenth-note patterns. Measure 25 has a fermata over a whole note. Measures 26-27 continue with sixteenth-note patterns. Measure 28 has a fermata over a whole note. Measures 29-30 continue with sixteenth-note patterns. Measure 31 has a fermata over a whole note.

Allegro

Musical score for the Allegro section, measures 16 through 23. The music is in 3/8 time with a key signature of two flats. Measure 16 has a fermata over a whole note. Measures 17-18 continue with eighth-note patterns. Measure 19 has a fermata over a whole note. Measures 20-21 continue with eighth-note patterns. Measure 22 has a fermata over a whole note. Measure 23 has a fermata over a whole note.

32



40



47



54



69



77



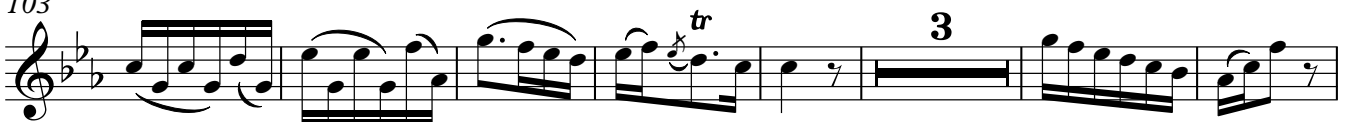
87



95



103



113



121

