

N°7. FINALE II.

In *DO*

Allegro brillante

Musical notation for the first section of the piece, measures 1-18. The notation is in treble clef with a common time signature (C). It begins with a dynamic marking of *f* (forte) and *p* (piano). The melody features eighth and sixteenth notes with various articulations. Measure numbers 8, 17, 18, and 18 are indicated. A fermata is present at the end of measure 18.

CORO DI ZINGARELLE

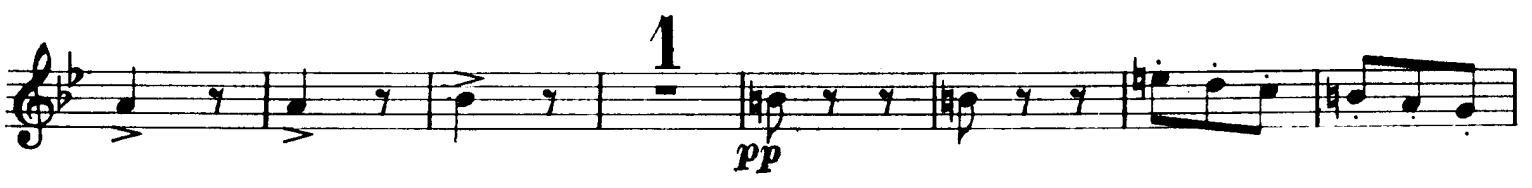
Allegro moderato

Musical notation for the *Coro di Zingarelle* section, measures 19-22. The notation is in treble clef with a key signature of two sharps (D major) and a common time signature (C). It begins with a dynamic marking of *p* (piano). The melody features eighth and sixteenth notes with various articulations and rests. Measure numbers 19, 20, 21, and 22 are indicated. A fermata is present at the end of measure 22. The section concludes with a dynamic marking of *p* (piano).

CORO DI MATTADORI

Allegro assai mosso

Allegro assai mosso



2

pp

24

cresc.

cresc. ancora

25

ff

SEGUITO DEL FINALE II.

Allegro

In *Sib*

20

Allegro agitato

26

pp